

**SEMI-ANNUAL REPORT
FOR THE ENVIRONMENTAL MANAGEMENT AND IMPLEMENTATION OF
ENVIRONMENTAL TERMS DURING
OPERATION AND MAINTENANCE OF CONCESSION PROJECT**

**PROJECT: “DESIGN - CONSTRUCTION - FINANCING - OPERATION - MAINTENANCE
AND EXPLOITATION OF THE PROJECT
IONIA ODOS MOTORWAY FROM ANTIRRIO TO IOANNINA,
PATHE ATHENS (METAMORFOSI I/C) – MALIAKOS (SKARFEIA) AND
CONNECTING BRANCH OF PATHE SCHIMATARI - CHALKIDA”**



Date	July 2022
Created by:	Concessionaire 

**REFERENCE PERIOD
A' SEMESTER 2022**

CONTENTS

- 1. INTRODUCTION**
- 2. PROJECT DESCRIPTION**
 - 2.1 PATHE Motorway
 - 2.2 IONIA ODOS Motorway
- 3. SUPERVISORY SERVICES (PROJECT IMPLEMENTERS)**
- 4. ENVIRONMENTAL AUTHORIZATION**
 - 4.1 JMD ETA and their validity – Present Situation
 - 4.1.1 PATHE (METAMORFOSI – SKARFEIA)
 - 4.1.2 CONNECTING BRANCH OF PATHE: CHALKIDA – SCHIMATARI
 - 4.1.3 IONIA ODOS MOTORWAY (ANTIRRIO – IOANNINA)
 - 4.2 Submissions
 - 4.3 Outstanding issues
 - 4.3.1 PATHE Motorway
 - 4.3.2 IONIA ODOS Motorway
- 5. SENSITIVE AREAS OF THE PROJECT**
 - 5.1 PATHE Motorway
 - 5.2 IONIA ODOS Motorway
- 6. ATMOSPHERIC POLLUTION**
 - 6.1 PATHE Motorway
 - 6.2 IONIA ODOS Motorway
- 7. NOISE AND TRAFFIC VOLUME**
- 8. WASTE MANAGEMENT**
 - 8.1 Liquid wastes
 - 8.2 Solid wastes
 - 8.3 Waste Producer Table – EWR
- 9. CLEANING AND MAINTENANCE**
- 10. ACCIDENTS – ACCIDENTAL POLLUTION – ACTION PLAN**
- 11. SPECIAL TERMS (E.G. TANKS, DRAINAGE MANAGEMENT)**
- 12. PLANTINGS – MAINTENANCE OF VEGETATION**
- 13. CONCESSIONAIRE'S ENVIRONMENTAL DEPARTMENT**
- 14. REPORTS (SEMI-ANNUAL – ANNUAL – SUBMISSIONS)**
- 15. MONTHLY FOLLOW UP – CHECK LISTS**
- 16. INSPECTIONS BY ENTITIES – FINES**
- 17. CERTIFICATIONS**
- 18. ENVIRONMENTAL BUDGET**
- 19. CORPORATE SOCIAL RESPONSIBILITY**
- 20. ANNEXES**

1. INTRODUCTION

This Environmental Management Report outlines the company's, NEA ODOS S.A., Environmental Management Processes during the operation and maintenance of the Concession Project for the first semester of 2022 (01.01.2022 to 30.06.2022).

The implementing of a program to monitor the environmental impact for the NEA ODOS S.A., apart from its enforcement by the environmental terms of the project, is done in such a way that it has multiple beneficial nature to the man-made and the natural environment of the areas of influence, as well as to serve in the best possible way the users, where the **PATHE Motorway, Metamorfoosi – Skarfeia Section 172 km**, and the **IONIA ODOS “Antirrio – Ioannina” of 196 km length** passes.



The monitoring of environmental and social parameters is done in such a way that enables early recognition of harmful tendencies and permits the reduction and/or elimination of the negative effects, by intervening with suitable protective measures. Additionally, the constant monitoring enables the effectiveness assessment of the proposed protection measures, so that the protection of the affected by the operation and the maintenance of the motorway environmental parameters is ensured over time. The diligent collection and recording of qualitative and quantitative evidence during constant E.T. monitoring also aims to promote further awareness on the impacts that the construction of such projects may have on similar environments.

At the PATHE motorway, section “Metamorfoosi – Skarfeia”, and at the IONIA ODOS MOTORWAY “Antirrio – Ioannina”, a comprehensive environmental monitoring program is implemented, through which all Environmental Terms are met, as detailed below.

2. PROJECT DESCRIPTION

2.1 PATHE Motorway

State : Hellenic Republic

Concessionaire : NEA ODOS S.A.

Motorway : PATHE

Section : Metamorfossi – Skarfeia



The PATHE motorway at the **section Metamorfossi – Skarfeia** includes:

1. 30 (thirty) Junctions

- Metamorfossi I/C near K.P. 15+500
- Tatoi I/C K.P. near K.P. 17+000
- Pyrna I/C K.P. near K.P. 19+000
- Kalyftaki I/C near K.P. 20+000
- Varympompi I/C near K.P. 23+000
- Mpogiati I/C near K.P. 28+000
- Afidnes I/C near K.P. 34+000
- Kapandriti I/C near K.P. 35+000
- Markopoulo I/C near K.P. 39+500
- Malakassa I/C near K.P. 44+000
- Oinofyta I/C near K.P. 56+000
- Oinoi I/C-1st branch near K.P. 63+00
- Chalkida I/C near K.P. 66+000
- Half-junction Schimatari A near K.P. 66+500
- Half-junction Schimatari B near K.P. 67+500
- Ritsona I/C near K.P. 75+500
- Thebes I/C near K.P. 90+000
- Camp I/C near K.P. 100+500
- Akraifnio I/C near K.P. 107+500
- Kastro I/C near K.P. 115+00
- Martino I/C near K.P. 126+000
- Malesina I/C near K.P. 129+000
- Tragana I/C near K.P. 137+500
- Atalanti I/C near K.P. 145+500
- Livanates I/C near K.P. 149+500
- Arkitsa I/C near K.P. 154+500
- Loggos I/C near K.P. 166+000
- Latomeio I/C near K.P. 172+500
- Half-junction K. Vourla (East) near K.P. 177+500
- Half-junction K. Vourla (West) near K.P. 180+000



2. 3 (three) Frontal & 10 (ten) Lateral Toll Stations

i. Frontal

- Afidnes near K.P. 32+500
- Thebes near K.P. 96+00
- Tragana near K.P. 135+500

ii. Lateral

- 2 on the Kapandriti I/C near K.P. 35+500
- 2 on the Malakassa I/C near K.P. 44+000
- 2 on the Oinofyta I/C near K.P. 55+500
- 2 on the Thebes I/C near K.P. 90+000
- 2 on the Tragana I/C near K.P. 137+500



3. 5 (five) Motorists Service Stations

- Varympompi MSS (to Athens) near K.P. 24+500
- Kapanditi MSS (to Lamia) near K.P. 36+500
- Malakasa MSS (Bilaterally) near K.P. 48+000
- Schimatari MSS (Bilaterally) near K.P. 70+500
- Atalanti MSS (Bilaterally) near K.P. 144+000



4. 13 (thirteen) Temporary Parking Areas with WC facilities

- Parking Area (towards Athens) near K.P. 38+500
- Parking Area (towards Athens) near K.P. 64+000
- Parking Area (towards Lamia) near K.P. 64+000
- Parking Area (towards Lamia) near K.P. 83+500
- Parking Area (towards Athens) near K.P. 84+500
- Parking Area (towards Lamia) near K.P. 98+000
- Parking Area (towards Athens) near K.P. 98+500
- Parking Area (towards Lamia) near K.P. 110+500
- Parking Area (towards Athens) near K.P. 113+500
- Parking Area (towards Lamia) near K.P. 131+000
- Parking Area (towards Athens) near K.P. 134+000
- Parking Area (towards Athens) near K.P. 141+500



- Parking Area (towards Lamia) near K.P. 142+500

5. 8 (Eight) Winter Maintenance Stations (WMS)

- Varympompi WMS near K.P. 24+500
- Markopoulo WMS near K.P. 38+500
- Schimatari WMS near K.P. 63+500
- Thebes WMS near K.P. 90+000
- Akraifnio WMS near K.P. 107+500
- Martino WMS near K.P. 126+000
- Tragana WMS near K.P. 135+500
- Latomeio WMS near K.P. 173+500



6. 6 (six) Tunnels

- Near K.P. 168+500 to near K.P. 169+500 (Bilaterally)
- Near K.P. 173+500 to near K.P. 176+000 (Bilaterally)
- Near K.P. 176+000 to near K.P. 176+500 (Bilaterally)



7. Other support facilities for the operation of the motorway

- Administration building near K.P. 23+000
- Customer service building and Parking Areas on the site of Afidnes toll station K.P. 32+355
- Police building near K.P. 32+500
- Markopoulo MCC (Maintenance Buildings) near K.P. 38+500
- Thebes MCC (Maintenance, Fire-fighting and Police Buildings) near K.P. 90+000
- Schimatari Traffic Management Center (TMC) near K.P. 63+500
- Atalanti MCC (Maintenance, Fire-fighting and Police Buildings) near K.P. 145+500
- Tunnel Control Center near K.P. 176+000

The exact K.P.s are depicted in Annex 1.

The sections of the Concession Contract Project are divided in seven (7) Geographical Units (GU).

S/N	SECTION	Km
1	Metamorfosi – Yliki Section	80.37
2	Yliki – Kastro Section	20.71
3	Kastro – Tragana Section	20.38
4	Tragana – Arkitsa Section	18.77

5	Arkitsa – Agios Konstantinos Section	10.37
6	Agios Konstantinos – Kamena Vourla Section	16.11
7	Kamena Vourla – Mendenitsa (Skarfeia) Section	3.74

2.2 IONIA ODOS Motorway

State: Hellenic Republic

Concessionaire: NEA ODOS S.A.

Motorway: IONIA ODOS

Section: Antirrio – Ioannina

Ionias Odos includes:

1. 19 Junctions

- Antirrio I/C on near K.P. 5+500
- Gavrolimni I/C on near K.P. 18+500
- Evinochori half-junction on near K.P. 27+500
- Messolonghi I/C near K.P. 32+000
- Agrinio (South) I/C near K.P. 51+500
- Ag. Iliia I/C on near K.P. 55+500
- Aggelokastro I/C on near K.P. 60+000
- Rigani I/C on near K.P. 65+000
- Agrinio (North) I/C near K.P. 81+000
- Preveza I/C on near K.P. 89+500
- Amfilochia I/C on near K.P. 106+000
- Kompoti half-junction on near K.P. 130+500
- Arta I/C on near K.P. 141+000
- Filippiada I/C on near K.P. 153+000
- Ammotopos half-junction on near K.P. 160+000
- Gorgomylos I/C on near K.P. 168+500
- Terovo I/C on near K.P. 181+500
- Avgo I/C on near K.P. 192+500
- Egnatia I/C on near K.P. 201+000



2. 4 Frontal & 10 Lateral Toll Stations

a. Frontal:

- Klokova near K.P. 15+500
- Aggelokastro near K.P. 61+500
- Menidi near K.P. 116+00
- Terovo near K.P. 180+000

b. Lateral:

- 2 on Gavrolimni I/C near K.P. 18+500
- 2 on Messolonghi I/C near K.P. 32+00
- 2 on Agrinio I/C near K.P. 81+000
- 2 on Arta I/C near K.P. 141+000
- 2 on Gorgomylos I/C near K.P. 168+500



3. 9 Motorists Service Stations

- On Evinochori I/C near K.P. 27+000 (bilaterally)
- On Amvrakia near K.P. 86+000 (bilaterally)
- On Amfilochia near K.P. 100+500 (to Ioannina)
- On Filippiada near K.P. 154+000 (bilaterally)
- On Episkopiko near K.P. 195+000 (bilaterally)



4. Other support facilities for the operation of the motorway (MCC – Maintenance Control Center, TMC – Traffic Management Center)

- Klokova TMC near K.P. 15+500
- Messolonghi MCC near K.P. 31+500
- Amfilochia MCC near K.P. 100+500
- Filippiada MCC near K.P. 154+000
- Episkopiko TMC near K.P. 195+000



5. 4 Tunnels

- Makyneia Tunnel, 500 m length near K.P. 9+100
- Klokova Tunnel, 2,890 m length near K.P. 11+500
- Kalydona Tunnel, 1,230 m length near K.P. 28+500
- Ampelia Tunnel, 870 m length near K.P. 197+500



6. Bridges

- Makyneia Bridge, 67.5 (r) & 102 m (l) near K.P. 9+000

- Evinos River Bridge, 254 (r) & 259 m (l) near K.P. 23+500
- Xirorema Bridge, near K.P. 105+500
- Krikelo Bridge, 97 m length near K.P. 111+000
- Menidi Bridge, 554 m length near K.P. 123+500
- Gymnotopos Bridge, 253 m length near K.P. 163+500
- Bridge near K.P. 168+000
- Tsagkaropoulos Bridge, 440 m length near K.P. 172+000
- Bridge 105 m length near K.P. 173+000
- Kryfovos Bridge, 280 m length near K.P. 189+000



7. 4 Winter Maintenance Stations (WMS)

- Messolonghi WMS near K.P. 31+500
- Amfilochia WMS near K.P. 100+500
- Filippiada WMS near K.P. 154+000
- Terovo WMS near K.P. 181+500
- Episkopiko WMS near K.P. 195+000

The exact K.P.s are depicted in Annex I.

The sections of the Project are divided in five (5) Geographical Units (GU), in accordance with the approved Environmental Terms of the project.

S/N	SECTION	Km
1	Antirrio – Kefalovryssos Section (South Agrinio Bypass End)	42,66
2	Agrinio Bypass Section	32,77
3	North Agrinio Bypass End (Kouvaras) – South Arta Bypass End (Kompoti)	53,36
4	Arta Bypass Section	16,05
5	North Arta Bypass End (Filippiada) - Ioannina (Eleousa)	50,30

3. SUPERVISORY SERVICES (PROJECT IMPLEMENTERS)

The Supervisory Services of the Concession Project are:

- Special Service for Public Works / Construction of Transportation Projects with Concession Contract (EYDE/KSESP), 5 Karystou St., 115 23, Athens.
- Directorate D17, Directorate of Infrastructure Operation, Maintenance & Exploitation with Concession Contract, 70 Panormou St., 115 23, Athens.

Concessionaire: NEA ODOS S.A.

Motorway: PATHE (Metamorfossi – Skarfeia) & IONIA ODOS
Neas Erythraias Ave. 19, Nea Erythraia, 146 71 – Athens, Greece

Tel: +30 210 3447300, **Fax:** +30 210 6178011

Email: info@neaodos.gr



4 ENVIRONMENTAL AUTHORIZATION
 4.1 JMD ETA and their validity – Present Situation
 4.1.1 PATHE (METAMORFOSSI – SKARFEIA)

The per-section validity period of the approved environmental terms for the PATHE section Metamorfossi – Skarfeia are presented in the following table:

S/N	Section	E.T. Validity	ET Decisions issued
1	Metamorfossi – Yliki Section	The ETAD shall be in force until 17-09-2033 (Decision YPEN/GDPP/DIPA with prot. no. YPEN/DIPA 61030/1796/17.09.2018)	MAIN PROJECT <ul style="list-style-type: none"> EYPE No 126119/08-02-2007, ET Approval JMD EYPE No 200817/23-07-2012 ET Amendment Decision regarding the adjacent network DIPA No 145495/21-01-2015 ET Amendment Decision regarding the parking areas, locations of future motorist service stations and lateral toll stations at Oinofyta. DIPA No 1170/16-01-2018 ET Amendment MD on the design of the Kifissia, Varympompi junctions (with lateral toll stations) and Agios Stefanos lateral toll stations. YPEN/DIPA/61030/1796/17-08-2018 Decision on the renewal of time of the ETs of the Metamorfossi - Yliki, Yliki - Kastro, Kastro - Tragana and Arkitsa - Ag. Konstantinos sections of PATHE motorway. YPEN/DIPA/54395/1335/15-10-2019 Decision on ET Amendment of Metamorfossi – Yliki and Tragana – Arkitsa sections for the replacement of three bridges at Ritsona, Thiva and Atalanti junctions. YPEN/DIPA/31281/05-11-2019 Decision approving the Data File for the adaptation to the requirements of the JMD 1915/2018 (B' 304) for the Metamorfossi - Skarfeia section of PATHE motorway.

**SEMI-ANNUAL REPORT
FOR THE ENVIRONMENTAL MANAGEMENT AND IMPLEMENTATION
OF ENVIRONMENTAL TERMS DURING OPERATION AND MAINTENANCE**

			<ul style="list-style-type: none"> • YPEN/DIPA/70928/4601/02-11-2021, Decision amending the E.T. regarding: a) the Varymbobi I/C, b) the temporary traffic regulations at the junction of Elaion and Ermioni streets of the Municipality of Kifissia, c) the adaptation/compliance with the latest regulatory framework. • YPEN/DIPA/76493/5102/18-03-2022, Decision amending the EPO JMD 126119/08.02.2007 of PATHE motorway, as amended and in force, as regards the technical alterations to the design of Thiva Frontal toll stations. <p>ANCILLARY WORKS</p> <ul style="list-style-type: none"> • EYPE No 144265/22-09-2009 Decision on approving the design for Afidnes, Thiva Frontal Toll Stations and Kapandriti, Malakassa, Thiva Lateral Toll Stations. • EYPE No 141083/20-10-2009 Decision on approving STIS for implementation and operation of Kapandriti and Thiva MEMC. • EYPE No 122399/1-4-2010 Decision on approving the construction and operation of PATHE snow removal centers. • EYPE No 195827/31-01-2011 Decision on approving the construction and operation of six parking areas. • EYPE No 197957/06-04-2011 Decision on approving the design of roads at Mpogiati I/C • EYPE No 200858/25-7-2012 Decision on approving the implementation and operation of clients service building and parking areas at Afidnes Frontal Toll Station. • EYPE No 172045/09-04-2014 TEPEM approval on Hellenic Police vehicle refueling facilities at Thiva.
--	--	--	---

**SEMI-ANNUAL REPORT
FOR THE ENVIRONMENTAL MANAGEMENT AND IMPLEMENTATION
OF ENVIRONMENTAL TERMS DURING OPERATION AND MAINTENANCE**

			<ul style="list-style-type: none"> • DIPA No 151044/03.08.2015 TEPEM approval for the general administration building of PATHE in Varympompi. • DIPA No 151494/29.10.2015 TEPEM approval for the relocation of the maintenance building from Kapandriti MEMC to Malakassa area. • DIPA No 153346/15.12.2015, TEPEM approval for the relocation of the police building from the environmentally authorized position Kapandriti MCC (K.P. 29+000) to Afidnes area. • DIPA No 100451/30.05.2016, Approval of compliance documentation of at-grade I/C 1 Final Design at Malakassa I/C area. • DIPA No 39764/24.08.2016, Approval of compliance documentation of Oinoi at-grade I/C (IKL1) Final Design at Oinoi I/C area. • Prot. No. 10300/6-6-2018 TEPEM approval for the mechanical laboratories, laundry – lubrication facilities at Thiva, Martino & Atalanti MEMC. • YPEN/DIPA/60950/1789/14-09-2018 TEPEM approval on the relocation of the fire-brigade building from Kapandriti MEMC to Malakassa MEMC • YPEN/DIPA/61255/3656/18-09-2020 TEPEM approval of Varympompi snow removal station. • Prot. No. YPEN/DIPA/14194/956/02-03-2021 Decision on approving recharging and refueling points for vehicles at Schimatari MSS.
2	Yliki – Kastro	The ETAD shall be in force until 17-09-2023 (Decision YPEN/DIPA with prot. no. YPEN/DIPA 61030/1796/17-09-2018)	<p>MAIN PROJECT</p> <ul style="list-style-type: none"> • JMD No 36118/94/10-07-1995, JMD approving the environmental terms

**SEMI-ANNUAL REPORT
FOR THE ENVIRONMENTAL MANAGEMENT AND IMPLEMENTATION
OF ENVIRONMENTAL TERMS DURING OPERATION AND MAINTENANCE**

			<ul style="list-style-type: none"> • EYPE No 101617/22-09-2006: JMD renewing the validity time and ET amendments as to the Yliki alterations (91 & 97), pollutant retention tanks, and ATEMKE site restoration (for the concession) • EYPE No 140792/12-06-2009, E.T. amendment JMD • DIPA No 145495/21.01.2015 E.T. Amendment Decision about the Parking Areas, the future motorists service stations positions of the motorway and the lateral toll stations of Oinofyta. • YPEN/DIPA/61030/1796/17-09-2018 Decision on renewing the validity time of Environmental terms for the Metamorfossi – Yliki, Yliki – Kastro, Kastro –Tragana and Arkitsa –Ag. Konstantinos sections of the PATHE motorway. • No YPEN/DIPA/31281/2108/05-11-2019, Decision approving Documentation for the adaptation to the requirements of the JMD 1915/2018 (B' 304) for Metamorfossi - Skarfeia section of PATHE Motorway.
3	Kastro – Tragana	The ETAD shall be in force until 17-09-2033 (YPEN/GDPP/DIPA with YPEN/DIPA prot. no. 61030/1796/17.09.2018)	<p>MAIN PROJECT</p> <ul style="list-style-type: none"> • JMD No 33838/94/10-7-1995 JMD ET approval • EYPE No 103909/12-05-2006, JMD Amendment & Extension of ET validity time • EYPE No 139132/30-04-2009 JMD E.T. Amendment • DIPA 145495/21-01-2015, Decision amending E.T. regarding the Parking Areas, the future motorists service stations positions of the motorway and the lateral toll stations of Oinofyta. • DIPA 43269/09-09-2016 Decision amending E.T. regarding the construction of right side road network from Malessina I/C to MC 19 on Proskyna – Theologou street.

**SEMI-ANNUAL REPORT
FOR THE ENVIRONMENTAL MANAGEMENT AND IMPLEMENTATION
OF ENVIRONMENTAL TERMS DURING OPERATION AND MAINTENANCE**

			<ul style="list-style-type: none"> YPEN/DIPA/61030/1796/17-09-2018 Decision amending the validity time of ET for the Metamorfossi – Yliki, Yliki – Kastro, Kastro –Tragana and Arkitsa –Ag. Konstantinos sections of the PATHE motorway. No YPEN/DIPA/31281/2108/05-11-2019, Decision approving the Documentation for the adaptation to the requirements of the JMD 1915/2018 (B' 304) for Metamorfossi - Skarfeia section of PATHE Motorway. <p>ANCILLARY WORKS</p> <ul style="list-style-type: none"> EYPE prot. no. 146696/18-11-2009 Decision approving design amendments at points of Kastro – Agios Konstantinos section for implementation and operation of: Tragana – Arkitsa – Loggos Lateral Toll Stations, Tragana, Arkitsa Frontal Toll Station and Fire Brigade, Police and Maintenance buildings at Atalanti junction_Assessment
4	Tragana – Arkitsa	The ETAD shall be in force until 06.02.2032 (Decision YPEN/GDPP/DIPA with prot. no. oik. 6366/06.02.2017)	<p>MAIN PROJECT</p> <ul style="list-style-type: none"> JMD No 36759/94/10-7-1995 approving environmental terms EYPE No 103910/12-05-2006, JMD amending & extending the E.T. validity time No 145495/21.01.2015 E.T. Amendment about the Parking Areas, the future motorists' service stations positions of the motorway and the lateral toll stations of Oinofyta. Decision 6366/06.02.2017 on E.T. validity time renewal and amendment about the Motorists Service Station of Atalanti MSS. No YPEN/DIPA/54395/1335/15-01-2019, Amendment of the environmental terms of the sections of the replacement of three bridges at Ritsona, Thiva, Atalanti junctions.

**SEMI-ANNUAL REPORT
FOR THE ENVIRONMENTAL MANAGEMENT AND IMPLEMENTATION
OF ENVIRONMENTAL TERMS DURING OPERATION AND MAINTENANCE**

			<ul style="list-style-type: none"> No YPEN/DIPA/31281/2108/05-11-2019, approval of Documentation for the adaptation to the requirements of the JMD 1915/2018 (B' 304) for Metamorfossi - Skarfeia section of PATHE Motorway. <p>ANCILLARY WORKS</p> <ul style="list-style-type: none"> EYPE No 146696/18-11-2009 Decision approving design modifications at points of Kastro - Agios Konstantinos section for installation and operation of: Tragana, Arkitsa, Loggos Lateral Toll Stations, Tragana, Arkitsa Frontal Toll Stations and Fire Brigade, Police and Maintenance buildings at Atalanti junction_Assessment. EYPE No 122399/1-4-2010 Approving the construction and operation of snow removal centers.
5	Arkitsa – Agios Konstantinos	The ETAD shall be in force until 17.09.2033 (decision YPEN/GDPP/DIPA with prot. no. 61030/1796/17-09-2018).	<p>MAIN PROJECT</p> <ul style="list-style-type: none"> JMD No 39516/94/10-7-1995 approving the E.T. EYPE No 103908/12-05-2006, JMD renewing the E.T. validity time DIPA No 145538/21.01.2015 Decision approving E.T. for Arkitsa MSS. YPEN/DIPA/61030/1796/17-09-2018 Decision renewing the validity time of Metamorfossi – Yliki, Yliki – Kastro, Kastro – Tragana and Arkitsa – Ag. Konstantinos of PATHE motorway Prot. no YPEN/DIPA/31281/2108/05-11-2019, approving the Documentation for the adaptation to the requirements of the JMD 1915/2018 (B' 304) for Metamorfossi - Skarfeia section of PATHE Motorway. <p>ANCILLARY WORKS</p> <ul style="list-style-type: none"> EYPE prot. no. 146696/18-11-2009 Decision approving design amendments at points of Kastro – Agios Konstantinos section for implementation and operation of: Tragana – Arkitsa – Loggos Lateral

**SEMI-ANNUAL REPORT
FOR THE ENVIRONMENTAL MANAGEMENT AND IMPLEMENTATION
OF ENVIRONMENTAL TERMS DURING OPERATION AND MAINTENANCE**

			Toll Stations, Tragana, Arkitsa Frontal Toll Station and Fire Brigade, Police and Maintenance buildings at Atalanti junction_Assessment
6	Agios Konstantinos – Kamena Vourla	The ETAD shall be in force until 17.09.2034 (Decision of YPEN/GDPP/DIPA with prot. no. YPEN/DIPA 82386/5348/17.09.2019).	<p>MAIN PROJECT</p> <ul style="list-style-type: none"> • JMD No 85676/30-07-2002, E.T. Approval • JMD No 126386/04-06-2004 E.T. Amendment • Decision GDPP/DIPA 82386/5348/17-09-2019 Decision Renewing and Amending the E.T. as regards the Fire-Brigade building at Knimida section. • No YPEN/DIPA/31281/2108/05-11-2019, Decision approving the Documentation for the adaptation to the requirements of the JMD 1915/2018 (B' 304) for Metamorfossi - Skarfeia section of PATHE Motorway. <p>ANCILLARY WORKS</p> <ul style="list-style-type: none"> • EYPE No 122399/1-4/2010 Approval of construction and operation of snow removal centers.
7	Kamena Vourla – Mendenitsa	The Decision of ET approval shall be in force until 07-12-2036 (Decision YPEN/Γ.Δ.Π.Π./DIPA with prot. no. YPEN/DIPA/56975/1510/07-12-2021)	<ul style="list-style-type: none"> • JMD No 67031/19-10-1998, E.T. Approval • No YPEN/DIPA/31281/2108/05-11-2019 Decision approving Documentation for the adaptation to the requirements of the JMD 1915/2018 (B' 304) for Metamorfossi - Skarfeia section of PATHE Motorway. • No YPEN/DIPA/56975/1510/07-12-2021 Decision approving new ET as regards the operation of Kamena Vourla – Mendenitsa section of PATHE motorway.

4.1.2 CONNECTING BRANCH OF PATHE: SCHIMATARI - CHALKIDA

S/N	Section	E.T. Validity	ET decisions issued
1	Schimatari - Chalkida	The ETAD shall be in force until 01-04-2029 (Decision ΥΠΕΚΑ/GDPP/ΕΥΡΕ/MD οικ 171818/01-04-2014)	<ul style="list-style-type: none"> • JMD 106530/15-03-2000: Schimatari – Chalkida section improvement • MD 171818/01-04-2014 New EIA of the section approval due to expiry of the original JMD ETA validity and approval of frontal toll stations at Chalkida (Vathy)

4.1.3 IONIA ODOS MOTORWAY (ANTIRRIO – IOANNINA)

The per-section validity period of the approved environmental terms for the **IONIA ODOS** motorway as well as the authorizations issued are presented in the following table:

S/N	Section	E.T. Validity	E.T. Decisions issued
1	Antirrio – Kefalovryssos (South Agrinio Bypass End)	The JMD of the said section shall be in force until 19-11-2030 (Decision YPEN/GDPP/DIPA with prot. no. 149145/19.11.2015) & The MD shall be in force until 14-04-2030 (MD DIPA with prot. no. oik 147996/14-04-2015)	MAIN PROJECT <ul style="list-style-type: none"> • JMD EYPE/142128/25-07-2005 E.T. Approval • MD EYPE/ETA 166142/13-02-2013 ET amendment as to the road corridor alignment design of the mentioned project at Vasiliki, Evinos river and Antirrio areas as well as the micro-optimizations along the above mentioned approved project.” • MD DIPA/147996/14-04-2015: Approval of Environmental Terms (ETA) for project “Ionia Odos: Antirrio – Kefalovryssos (South Agrinio Bypass End)”, Klokova area from K.P. 6+163,5 to 11+827 (6+195,6 to 11+552 originally approved alignment design), and Amendment as to section from K.P. 5+4104,5 to 6+163,5 (5+104,5 to 6+195,6 originally approved alignment design), and K.P. 11+827 to 14+904,4 (11+552 to 14+904.4 approved alignment design). • DIPA Decision/148571/15.10.2015 amending the JMD 147996/14-04-2015 as regards the relocation of 5 pillars of the High Voltage Direct Current – HVDC • Γ.Δ.Π.Π./DIPA Decision/149145/19.11.2015: Extension of the time validity of the ET. • MD ETA 8568/17-02-2017 “Amendment of the (I) 142128/25-07-2005 JMD EPO as to the environmental authorization of the final design of Antirrio I/C and the lateral toll stations of Gavrolimni I/C and

**SEMI-ANNUAL REPORT
FOR THE ENVIRONMENTAL MANAGEMENT AND IMPLEMENTATION
OF ENVIRONMENTAL TERMS DURING OPERATION AND MAINTENANCE**

			<p>Messolonghi I/C (near K.P. 14+300 and K.P. 27+530 of IONIA ODOS respectively), and (II) amendment 147996/14-04-2015 JMD EPO environmental authorization of the frontal toll station of Klokova (near K.P. 10+100 of IONIA ODOS).</p> <ul style="list-style-type: none"> • Decision GDPP/DIPA 23650/15-05-2017 GDPP/DIPA “Amendment of ET for the environmental authorization of Evinochori MSS.” • Decision GDPP/DIPA 1594/19-01-2018 Amendment of JMD EPO 142128/25-07-2005 and 147996/14-04-2015 as to the alterations of the final design. <p>ANCILLARY WORKS</p> <ul style="list-style-type: none"> • Decision 100769/05-02-2016: TEPEM approval of Messolonghi and Filippiada MEMC • Decision 23680/05.10.2016 Approval of the Technical and Environmental Study (TEPEM) for the motorway Administration and Traffic Management Building of IONIA ODOS and the Fire-fighting Building at Klokova
2	Agrinio Bypass	The ETAD shall be in force until 01-02-2032 [Decision YPEN/GDPP/DIPA No 5559/01-02-2017 (Re: 153045/2015)]	<ul style="list-style-type: none"> • JMD 84982/96/11.04.1997 Approval of Environmental Terms • JMD EYPE 105889/08-07-2008 Extension of ET validity. • JMD EYPE 144713/23.09.2009: E.T. Amendment • MD DIPA Decision 100391/20.01.2016 E.T. Amendment • Decision No 5559/01.02.2017 GDPP/DIPA: extension of E.T. validity period.
3	Agrinio Bypass North End (Kouvaras) – Arta South Bypass End (Kompoti) and Arta North End Bypass	The ETAD shall be in force until 02-03-2031 (Decision YPEN/GDPP/DIPA with prot. no. 11198/03.03.2016)	<p>MAIN PROJECT</p> <ul style="list-style-type: none"> • EYPE JMD 141564/25-07-2005 E.T. Approval • EYPE JMD 167980/30.04.2013: E.T. Amendment • Decision of DG for Dec. EYPE 174140/ 28.07.2014: E.T. Amendment

**SEMI-ANNUAL REPORT
FOR THE ENVIRONMENTAL MANAGEMENT AND IMPLEMENTATION
OF ENVIRONMENTAL TERMS DURING OPERATION AND MAINTENANCE**

	<p>(Filippiada) – Ioannina (Eleousa)</p>		<ul style="list-style-type: none"> • JMD 150063/25.06.2015: “E.T. Amendment as to the sections at K.P. 105+500 to 108+700, 115+720 to 120+700, 152+446 to 154+796 to 181+710 to 186+650”. • GDPP/DIPA Decision 11198/03-03-2016: E.T. Amendment for the relocation or reconstruction of existing pylons of DEI due to involvement in the IONIA ODOS motorway under construction and Extension of validity period • MD Decision 9443/22-02-2017 of DEPUTY MINISTER of ENVIRONMENT AND ENERGY: E.T. Amendment for the environmental authorization <ul style="list-style-type: none"> ➤ of Amvrakia MSS (K.P. 81+150 to 81+435), ➤ of Amfilochia MSS and MCC (K.P. 95+300 to 95+762), ➤ of Frontal Toll Stations: of Menidi (K.P. 111+300) and Terovo (K.P. 174+100), ➤ of lateral toll station Gorgomylos I/C (K.P. 163+110), ➤ of the aggregate quarry exploitation of total surface area 33,938 m² at position TOUMPANOS of Amfilochia (K.P. 96+000), ➤ of Episkopiko MSS and MCC (K.P. 189+378 to 189+669) ➤ of the updated final design of the motorway to the sections from K.P. 152+446 to K.P. 162+354 and from K.P. 178+500 to K.P. 182+665. • GDPP/DIPA Decision 1592/19-01-2018 E.T. amendment as to the alterations of the final design. • GDPP/DIPA Decision oik. YPEN/DIPA/61239/3652/29-07-2021, ET Amendment as regards: (i) the technical differentiations of Kompoti semi-junction, (ii) the update of the final design of Amvrakia and Amfilochia MSS, (iii) the adjacent work of Terovo Snow-Removing Center.
--	--	--	--

**SEMI-ANNUAL REPORT
FOR THE ENVIRONMENTAL MANAGEMENT AND IMPLEMENTATION
OF ENVIRONMENTAL TERMS DURING OPERATION AND MAINTENANCE**

			<ul style="list-style-type: none"> • ANCILLARY WORKS • Decision 100769/05-02-2016: TEPEM Messolonghi (and Filippiada) MEMC
4	Filippiada - Arta Bypass	The ETAD shall be in force until 23-09-2029 (Decision ΥΠΕΚΑ/ΓΔΠ/ΕΥΠΕ with prot. no. 175041/23.09.2014)	<ul style="list-style-type: none"> • JMD 120756/96/03.06.1997, Approval of Environmental Terms for the construction and operation of the project “Ioannina – Antirrio Motorway, Filippiada – Arta Bypass section from K.P. 60+000 to K.P. 82+000 starting at Ioannina to Preveza and Arta regional units, including a 1km section of connecting road with Arta town. • ΕΥΠΕ JMD 132550/31.07.2003 ET Amendment, • ΕΥΠΕ JMD 137938/31.12.2003 ET Amendment, • ΕΥΠΕ JMD 141631/30-06-2009 ET Amendment of as to the design of the Arta I/C • Decision of ΓΔΠ/ΥΠΕΚΑ/ΕΥΠΕ with prot. no oik. 175041/ 23.09.2014) Extension of ET validity period and their amendment as to the final design of the project (longitudinal section/cross section of the road, technical and hydraulic works, side road network, tolls, road safety, etc.)

4.2 Submissions

A' semester of 2022

For **PATHE Motorway**, during the period of the A' semester of 2022, the Concessionaire submitted the following environmental studies:

- Amendment File of the JMD EPO no. 36759/94/10-07-1995 of the project “Construction and operation of the Tragana – Arkitsa section of PATHE motorway (as amended and in force)” as regards the variations from the MSS Atalanti final design update [Concessionaire to EYDE/KSESP with prot. no. 49676/01.02.2022, EYDE/KSESP to GDPP/DIPA with prot. no. EYDE/KSESP/G/F9.18/48354/17-02-2022].

For **IONIA ODOS Motorway**, during the period of A' semester of 2022, the Concessionaire submitted the following environmental studies:

- Environmental Impact Study (EIS) of the required flood protection works and interventions along the motorway of Ionia Odos – S3 Section, CH. 145+600 – CH. 179+200, Ammotopos, Kleissoura Streams and Terovo Trench & AEPO Amendment: Arta Bypass & Agrinio Bypass North Edge (Kouvaras) – Arta Bypass South Edge (Kompoti) and Arta Bypass North Edge (Filippiada) – Ioannina (Eleousa) [Concessionaire to EYDE/KSESP with prot. No. 49824/04.04.2022, EYDE/KSESP to GDPP/DIPA with prot. no. EYDE/KSESP/Γ/Φ9.18/127164/26.04.2022].
- Environmental Impact Study (EIS) for the amendment of AEPO 84982/96/11.4.1997 of the project: “IONIA ODOS: Agrinio wide bypass (as in force), regarding the additional/complementary hydraulic/flood protection works and interventions in this section.
[Concessionaire to EYDE/KSESP with prot. no. 48641/14.01.2021, EYDE/KSESP to GDPP/DIPA with prot. no. EYDE/KSESP/Γ/Φ9.18/32140/08.02.2021].

4.3 Outstanding issues

4.3.1 PATHE Motorway

The table below provides the environmental studies submitted for PATHE Motorway, Skarfeia - Raches Section; the issuance of the E.Ts is still under completion.

S/N	Section	Outstanding issues	Submissions	Observations
1	Tragana - Arkitsa	EIA of Lateral Toll Stations at Atalanti I/C and Livanates I/C	<ul style="list-style-type: none">• Submission of Nea Odos S.A. to EYDE/KSESP with prot. no. 47295/27-02-2020• Submission EYDE/KSESP to GDPP/DIPA with prot. no. Φ9/4765/06-07-2020	CANCELLED

2		Amendment File of the JMD EIA 36759/94/10-07-1995 as regards the alterations from the Atalanti MSS final design update	<ul style="list-style-type: none"> • Submission of Nea Odos S.A. to EYDE/KSESP with prot. no. 49676/01.02.2022 • Submission of EYDE/KSESP to GDPP/DIPA with prot. no. Φ9.18/48354/17-02-2022 	Approval of DIPA is pending.
---	--	--	--	-------------------------------------

4.3.2 IONIA ODOS Motorway

The environmental studies that have been submitted up to the reference year of the present report for the section Antirrio – Ioannina of the IONIA ODOS and the E.T. issuance is not yet completed are presented in the following table.

S/N	Section	Outstanding issues	Submissions	Observations
1	Antirrio – Kefalovryso (south end of Agrinio bypass)	Amendment File of JMD EIA 142128/25-07-2005 as regards the alterations from the Evinochori MSS final design update	<ul style="list-style-type: none"> • Submission of Nea Odos S.A. to EYDE/KSESP with prot. No 47654/05-06-2020. • Submission to EYDE/KSESP to DIPA/YPEN with prot. no. EYDE/KSESP/Γ/Φ9.18/7999/31-10-2018. 	Approval of DIPA is pending.
2		EIA of the required flood protections works and interventions along Ionia Odos motorway on the amendment of JMD EIA 142128/25-07-2005 (as amended and in force)	<ul style="list-style-type: none"> • Submission of Nea Odos S.A to EYDE/KSESP with prot. no. 48947/02.04.2021 • New submission of EYDE/KSESP to DIPA/YPEN with prot. no. EYDE/KSESP/Γ/F9.18/91303/12.04.2021 	Approval of DIPA is pending.
3	North Agrinio Bypass End (Kouvaras) – South Arta Bypass End (Kompoti) and North Arta Bypass End (Filippiada) – Ioannina (Eleousa)	EIA as regards the anti-flood shielding of the areas upstream and downstream of Ionia Odos - Section S2, CH. 107+120 – CH. 141+500, Remata Havas & Kakavakia, Koboteiko (upstream and downstream of Ionia Odos	<ul style="list-style-type: none"> • Submission of Nea Odos S.A. to EYDE/KSESP with prot. No 49621/30.12.2021. • Submission to EYDE/KSESP to DIPA/YPEN with prot. no. EYDE/KSESP/Γ/Φ9.18/10441/17.01.2022. 	Approval of DIPA is pending.

4		EIA as regards the anti-flood shielding of the areas upstream and downstream of Ionia Odos - Section S3, CH. 145+600 – CH. 179+200, Remata Ammotopou & Kleisoura and Terovo trench	<ul style="list-style-type: none"> • Submission of Nea Odos S.A. to EYDE/KSESP with prot. No. 49824/04.04.2022. • EYDE/KSESP submission to DIPA/YPEN with prot. no. EYDE/KSESP/Γ/Φ9.18/127164/26.04.2022. 	Approval of DIPA is pending.
5		EIA as regards the anti-flood shielding of the areas upstream and downstream of Ionia Odos – Section S2, CH. 107+120 – CH. 111+990 and CH. 130+265 - 141+500, Section S3: CH. 190+100-193+100 and CH. 190+000 - 192+000	<ul style="list-style-type: none"> • Submission of Nea Odos S.A. to EYDE/KSESP with prot. no. . 49986/10.06.2022 	Approval of DIPA is pending.
6	Agrinio Bypass (Kefalovryssos – Chryssovergi)	EIA on the amendment of ΑΕΠΟ 84982/96/11.4.1997 of the project: “IONIA ODOS: Agrinio bypass” (as in force), regarding the additional/ supplementary hydraulic/flood protections works and interventions on that section. Remata Moussouriotis. Underpass, Platyporos, Gaidroupnihtis & vertical receivers and Agios Elias trench.	<ul style="list-style-type: none"> • Submission of Nea Odos S.A. to EYDE/KSESP with prot. No 49599/23.12.2021 • Submission to EYDE/KSESP to DIPA/YPEN with prot. no. EYΔΕ/ΚΣΕΣΡ/Γ/Φ9.18/6292/10.01.2022. 	Approval of DIPA is pending.

5. SENSITIVE AREAS OF THE PROJECT

5.1 PATHE Motorway

The following table presents the natural areas under protection that the motorway passes through or is adjacent to, according to the approved E.T.

S/N:	Section	Ecologically Sensitive Areas
1	Yliki – Kastro Section	<ul style="list-style-type: none"> GR 2410001 «Yliki and Paralimni Lakes – Voiotikos Kifissos System»
2	Kastro – Tragana Section	<ul style="list-style-type: none"> GR 2410001 «Yliki and Paralimni Lakes – Voiotikos Kifissos System»
3	Tragana – Arkitsa Section	<ul style="list-style-type: none"> GR 2440001 “Wetland and islands of Atalanti Bay”
4	Agios Konstantinos – Kamena Vourla Section	<ul style="list-style-type: none"> GR 2440002 «Spercheios valley and estuary»

5.2 IONIA ODOS Motorway

The following table presents the natural areas under protection that the motorway passes through or is adjacent to, according to the approved E.T.

S/N:	Section	Ecologically Sensitive Areas
1	Antirrio – Kefalovryso (South Agrinio Bypass End)	<ul style="list-style-type: none"> GR2310001 “Acheloos Delta, Messolonghi – Aitoliko Lagoon, estuary of River Evinos, Echinades Islands, Petalas Island” GR2310005 “Mount Varassova” GR2310010 “Mount Arakynthos and the Strait of Kleisoura”
2	Agrinio Bypass	<ul style="list-style-type: none"> GR2310008 “Ozeros Lake” GR2310001 “Acheloos Delta, Messolonghi – Aitoliko Lagoon, estuary of River Evinos, Echinades Islands, Petalas Island”
3	North Agrinio Bypass End (Kouvaras) – South Arta Bypass End (Kompoti) and North Arta Bypass End (Filippiada) - Ioannina (Eleousa)	<ul style="list-style-type: none"> GR2310007 “Amvrakia Lake area”, GR2110004 “Amvrakikos Gulf, Katafourko Lagoon and Korakonissia” AB3090025 «Louros River» GR2130012 “Broader area of Ioannina lake” GR2110001 “Amvrakikos Gulf, delta of Louros river, Arachthos”
4	Arta Bypass	<ul style="list-style-type: none"> Rivers Arachthos and Louros

6. ATMOSPHERIC POLLUTION

According to the Environmental Terms of PATHE motorway, the air pollution measurement network includes 3 measuring stations: at Varympompi Interchange, Schimatari Interchange and Arkitsa Interchange. The Varympompi station was put into trial operation on 21/12/2011. Arkitsa station was put into trial operation on 19/12/2011 and Schimatari station was put into trial operation on June of 2013 (later, due to insufficient power supply at the position).

According to the Environmental Terms of the Ionia Odos Motorway, the air pollution measurement network also includes three (3) stations, at the Evinochori MSS, at the Filippiada MSS and the Episkopi MSS. The installation works of the stations began in June 2018 and their full operation (after the trial period) was completed in August 2018.

For the year 2021, a complete air pollution monitoring program was implemented by the above six air pollution stations, which are operating on a 24-hour basis. The air pollution report was submitted to the competent Services. The air pollution report was filed to the competent services (Directorate KAPA/YPEN with prot. no. 11141/198/07.02.2022, EYDE (Directorate D17) with receipt prot. no. 32036/07.02.2022 & EYDE/KSESP with receipt prot. no. 31988/7-2-2022). A similar report will also be elaborated and filed for 2022.

To measure the pollutants, the stations have been equipped with approved analyzers in accordance with the National Legislation (Ministerial Decision No 14122/549/E.103/2011 (Gov. Gazette 488/B/30.3.2011) "Measures to improve the air quality, in accordance with the provisions of Directive 2008/50/EC" of the European Parliament and the Council of the European Union of 21 May 2008 on ambient air quality and cleaner air for Europe. For every 24 hours, the following are recorded at all stations:

1. The PM₁₀, PM_{2,5}, CO, NO, NO₂, NO_x, SO₂, C₆H₆ (Benzene) pollutants
2. The meteorological conditions of each installation area

The pollutants are measured continuously throughout the day. The average primary pollution values are calculated every five minutes in the recording system that is installed at each station and connected to the analyzers. These measurements are transferred to the server of the air pollution measuring system (which is installed at Afidnes Control Center), via the Nea Odos optical fiber network, where they are stored. At the end of each month, the measurements are corrected on the network server. The corrections include calibration results and analyzer limit and slip corrections. After corrections, the average hourly, eight-hour, and 24-hour values of pollutants (NO₂, CO, O₃, SO₂, Benzene, suspended particles PM₁₀ and PM_{2,5}) are calculated and stored.

For 2021, the measured pollutant records were as follows:

6.1 PATHE Motorway

Suspended Particles PM₁₀

The Limit as of 01/01/2005 for PM₁₀ particles is 50µg/m³ on average daily value and should not be exceeded more than 35 times per year. In addition, the average annual value should not exceed 40µg/m³.

- **The average daily value (50µg/m³) was not exceeded > 35 times per year**
- **The average annual value of 40µg/m³ was not exceeded at any station.**

Suspended Particles PM_{2.5}

For suspended particles PM_{2.5}, the Limit as of 01/01/2015 is 25µg/m³ on the average annual value.

- **The average annual value of 25µg/m³ was not exceeded at any station.**

NO₂

The Limit as of 01/01/2010 is 200µg/m³ on average hourly value and should not be exceeded more than 18 times per year. In addition, the average annual value should not exceed 40µg/m³.

- **The value of 200µg/m³ >18 times per year was not exceeded at any toll station.**
- **The average annual value (40µg/m³) was not exceeded at any toll station.**

CO

The Limit as of 01/01/2005 is 10 mg/m³ (maximum daily eight-hour value).

- **The maximum daily eight-hour value of 10mg/m³ was not exceeded at any toll station.**

SO₂

The Limit as of 01/01/2010 is 350µg/m³ as average hourly value and should not be exceeded more than 24 times per year. Also, the average daily value is 125 µg/m³, which should not be exceeded more than 3 times per year.

Number of exceedances of average hourly value over 350µg/m³

- **The maximum average hourly value (350µg/m³) was not exceeded more than 24 times per year at any station.**
- **The average daily value of 125µg/m³ >3 times per year was not exceeded at any station.**



O₃

The objective as of 01/01/2010 is 120µg/m³ as maximum daily eight-hour value and should not be exceeded more than 25 times per year (average value in 3 years).

- **The maximum daily eight-hour value (120µg/m³)>25 times was not exceeded at any station.**
- **Benzene**

The limit as of 01/01/2010 is 5µg/m³ on average annual value.

- **The average annual value of 5µg/m³ was not exceeded at any station.**

6.2 IONIA ODOS Motorway

Suspended Particles PM₁₀

The Limit as of 01/01/2005 for PM₁₀ particles is 50µg/m³ on average daily value and should not be exceeded more than 35 times per year. Also the average annual value should not exceed 40µg/m³.

- **The average daily value of 50µg/m³>35 times per year was not exceeded**
- **The average of 40µg/m³ was not exceeded at any station**

Suspended Particles PM_{2.5}

For suspended particles PM_{2.5}, the limit of the average annual value as of 01/01/2015 is 25 µg/m³.

- **The average annual value of 25µg/m³ was not exceeded at any station.**

NO₂

The Limit as of 01/01/2010 is 200µg/m³ on average hourly value and should not be exceeded more than 18 times per year. In addition, the average annual value should not exceed 40µg/m³.

- **The average hourly value of 200µg/m³>18 times per year was not exceeded at any station**
- **The average annual value of 40µg/m³ was not exceeded at any station.**

CO

The Limit as of 01/01/2005 is 10 mg/m³ (maximum daily eight-hour value).

- **The maximum daily eight-hour value of 10mg/m³ was not exceeded at any station.**

SO₂

The Limit as of 01/01/2010 is 350µg/m³ as average hourly value and should not be exceeded more than 24 times per year. Also, the average daily value is 125 µg/m³, which should not be exceeded more than 3 times per year.



- **The average daily height-hour value of 350µg/m³>24 times per year was not exceeded at any station.**
- **The average daily value of 125µg/m³>3 times per year was not exceeded at any station.**

Benzene

The limit as of 01/01/2010 is 5µg/m³ on average annual value.

- **The average annual value of 5µg/m³ was not exceeded at any station.**

7. NOISE AND TRAFFIC VOLUME

The year 2021, the 24-hour traffic noise measurements of the monitoring program obtained are:

- 53 24-hour traffic noise measurements at the PATHE Motorway, Metamorfossi – Loggos section
- 14 24-hour traffic noise measurements at the PATHE Motorway, Loggos – Skarfeia section
- 3 24-hour traffic noise measurements at the connecting branch of PATHE Motorway, Schimatari – Chalkida section
- 52 24-hour traffic noise measurements at the IONIA ODOS Motorway, Antirrio – Ioannina section

The above traffic noise measurements also include 24-hour traffic noise measurements following noise complaints/grievances, as sent by the Concession Project Supervisory Service or as done through the Nea Odos Customer Service Center. As for the above sections, a total of 122 24-hour traffic noise measurements were obtained.

For the year 2021, the monitoring program O.K.TH. (Road Traffic Noise) that has been submitted and approved by the Directorate of KAPA/YPEN with the prot. No. YPEN/DKAPA/78038/1517/03-02-2022.

The noise measurement results and records of the road traffic volume, with the position, date, and measurement time interval, the prevailing meteorological conditions, the contact details and name of the measurement manager were recorded in a results sheet. In the case of systematic excess of the current limit for road traffic noise recording, the construction and operation of the project entity shall take the necessary measures to address the excesses.

- Before each 24-hour traffic noise measurement, calibration of the instruments was performed using specific acoustical calibrator, so that the reliability of the results be monitored during the recordings of the traffic noise environment.
- The following are mentioned for all measurement positions: the exact position, the exact time period and day of measurement, while it is noted that the measurement was performed under lack of rain and strong wind conditions, while for conditions of light wind, speed < 3 m/sec, always the use of a special windbreaker cover for the microphone was ensured. No traffic noise recordings were performed if other sources of noise pollution were noted in the immediate environment of the recording position, e.g. residents gatherings, construction of roads, buildings etc., or if the traffic flow was not the usual (e.g. weekends or holidays), or if the traffic fluidity was interrupted or disturbed from any random event, such as accident, etc.

In every 24-hour measurement, the following were recorded:

- the L^1 , L^{10} , L^{50} , L^{95} , L^{99} indexes as well as the maximum (L^{\max}) and minimum values (L^{\min});
- the O.K.TH. (Road Traffic Noise) level L^{10} (18-hour); & the level A-weighted equivalent

LAeq (08.00–20.00);

- the level A-weighted equivalent LAeq (24h); and finally
- the Lden, Lday, Levening & Lnight indicators, as well as the Ld-e of existing legislation in line with JMD with No 211773/2012 (FEK 1367/B/27-4-2012).



For 2022, a similar program is in progress, which is expected to be completed within the year (recording of 24-hour measurements in selected positions), when it shall be submitted to the Directorate of KAPA/YPEN for approval.

Finally, it is noted that the traffic volume is monitored daily at the section from Metamorphossi to Skarfeia of PATHE motorway, at the transit level at all toll stations (Afidnes, Kapandriti, Malakassa, Oinofyta, Thebes and Tragana), and are reported in monthly reports. For 2021, the Annual Average Daily Traffic was calculated at 22,039 transits (in both directions) at the Metamorfossi – Skarfeia section of PATHE, while the Annual Average Daily Traffic was calculated at 5,841 transits (in both directions) at IONIA ODOS.

8. WASTE MANAGEMENT

8.1 Liquid wastes

A comprehensive Environmental Management Plan has been developed and implemented, which includes the procedure for the management of hazardous liquid waste in accordance with the environmental terms and the existing legislation, while proper management documentation is requested by the subcontractors. Relevant archive has been created with the agreements and waste delivery receipts of authorized mineral oil management companies.

As for the hazardous liquid waste (engine, gear, lubricating oils etc.) resulting from the operation and maintenance works on the motorway, the concession company follows all procedures provided by the current legislation and cooperates with management entities authorized for environmental purposes and their quantities and distribution method are recorded in the respective approved Alternative Management System.

8.2 Solid wastes

The Concessionaire has contracted with the subcontractor for the cleaning and the collection of solid waste from the motorway, which are then transferred to appropriate licensed premises.

For the hazardous solid waste resulting from the operation and maintenance works on the motorway, the concession company follows all procedures provided by the current legislation and cooperates with management entities authorized for environmental purposes.





Moreover, fluorescent tubes and other mercury-containing waste, lead batteries, tires collected from the motorway, engine, gear and lubricating oils, iron and steel, plastics, animal tissue waste (dead animals), plant-tissue waste, and waste produced by the operation and maintenance works on the motorway and the quantity and delivery mode to each approved Alternative Management System of which is recorded.



Furthermore, NEA ODOS S.A., in the context of corporate social responsibility, has entered into agreements with Alternative Management System companies and recycles paper, plastic, batteries, used/damaged electrical and electronic equipment and toner. Additionally, NEA ODOS S.A. disposes a certified environmental quality management system

certified by ISO 14001:2015.



Finally, it should be noted that, in the context of the Environmental Monitoring, inspections are conducted at places where maintenance works are carried out and the corresponding checklist table is filled. Based on the checks, in case of failure to comply with the provisions, guidelines (corrective actions) for compliance are provided. The implementation of the corrective actions is checked through new inspections based on the checklist.

8.3 Waste Producer Table – EWR

Pursuant to Article 42, of Law 4042/2012 (FEK 24/A/13.02.2012), as amended by Article 157, paragraph 1 of Law 4389/2016 (FEK 94/A/27.05.2016) and JMD 1/1 (FEK 1/B'/04.01.2017), the Electronic Waste Registry was established, and by JMD 43942/4026 (FEK B' 2992/19.09.2016), liable for the electronic recording and registration are every organization or company the establishments of which produce waste and falling within the scope of Chapter A of Law 4014/2011 (A' 209).

For PATHE as well as Ionia Odos motorway, NEA ODOS S.A. was registered in the Electronic Waste Registry (Reg. No 1739), because it falls within the scope of the provisions of Law 4014/2011, since - in accordance with the No DIPA/ 37674/2016 (FEK 2471/B/10.08.2016) - the motorways fall under Group 1 projects (Air and land transportation projects) – Road building, S/N 1, and under subcategory A1.

For 2021 the concession company successfully submitted the relevant report of waste producer to the electronic waste registry (EWR) for every JMD ETA of the Concession Project separately.

For all previous years (before the operation of EWR), NEA ODOS S.A. has prepared and submitted the relevant reports for waste producer pursuant to JMD 13588/725/06 and on the basis of Law 2939/2001 (and its amendment Law 3854/2010).

9. CLEANING AND MAINTENANCE

All cleaning and maintenance works that took place during 2022 and for which compliance with the Environmental Terms was checked, are mentioned below:

- Vegetation pruning and maintenance.
- Garbage collection by garbage truck.
- Advertising billboard removal.
- Dead animal removal.
- Drain and culvert cleaning and maintenance.
- Sanitation system gutter slots cleaning.
- Drainage and other hydraulic works cleaning.



- Manual waste collection.
- Sweeping/Cleaning.
- Parking Area cleaning and washing.
- WC cleaning
- Bins replacement.
- Fencing Repair.
- Metal safety rails replacement
- Tunnel Maintenance.
- Road Marking Works.

For all the above works, monthly inspections are performed ensuring compliance to the E.T.; in the relevant Reports, checklists and corresponding tables per JMD are included.



10. ACCIDENTS – ACCIDENTAL POLLUTION – ACTION PLAN

An Action Plan for emergencies has been drafted, describing the measures for the timely collection and removal of hazardous substances after a relevant incident on the motorway are described, designed to prevent the pollution of waterways, soil, or wider environment of the motorway. The Plan is appended to the Police and Firefighting Agreement conducted between the Concessionaire and the Ministry of Interior, the Police and the Fire Department and includes all the measures to be taken and the necessary equipment to be used by the Operator in case of an accident and leakage of non-biodegradable substances.

It is also pointed out that during incident of hazardous cargo management, the competent bodies of the Fire and Traffic Departments shall be entirely in charge of the coordination. The Operator's role is auxiliary with a focus on the traffic management (signs, blocks, diversions) at the direction of the relevant departments, the restoration of the road surface (cleaning, obstruction removal, etc.) and infrastructures (damages, rails restoration, etc.) and the re-opening of the relevant road after the end of the incident.

The primary and essential tool to address accidental leakage - which creates an immediate risk of surface water and soil pollution - is the use of adsorbents, such as sand, sawdust, or special geotextile provided immediately after the release of hazardous cargo. Such materials are readily available by the Operator, the patrol units and the maintenance contractor for direct intervention.

The decontamination process, as well as the transportation and entire management of contaminated absorbents and the hazardous waste produced by such an incident shall be completed in accordance with the existing legislation, by appropriately licensed companies for the decontamination, transportation and management of hazardous waste, with the aim of timely response to highway accidents.

11. SPECIAL TERMS (E.G. TANKS, DRAINAGE MANAGEMENT)

- On-site infrastructure

A total of 9 Winter Maintenance stations have been environmentally authorized (with No 122399/1-4-2010 of EYPE) along the PATHE motorway. The installed and operating stations are located in the areas of Markopoulo, Schimatari, Thebes, Akraifnio, Martino, Tragana and Ag. Konstantinos (Latomeio).

For IONIA ODOS, the installed stations are located in the areas of Messolonghi, Amfilochia, Filippiada and Terovo.

- Visual disturbance by signs

All advertising billboards and signs within the concession limit have been removed. Regular inspections are carried out throughout the motorways, the advertising billboards - signs located within the expropriation limit are removed.

- Tunnel fire safety

There is cooperation with the Fire Department. Fire drills under “Large Scale” conditions was conducted on 12.04.2022 and the preparedness exercise in the S2A Tunnel “Knemida 2022” was successfully completed with the cooperation of the Fire Service, the Motorway Traffic and the EKAB (National Emergency Aid Centre). The main purpose of the exercise was to prepare the parties for their optimal response in the event of an emergency. The tunnel firefighting equipment is functional, with a network of 6” pipelines, under 7 Atm stable pressure, and HDS every 50m in each tunnel over 500m in length, with two taps, a storz and a 25m hose, in accordance with the Construction Study.

- Pollution Control Units

Upon completion of the motorway improvements in Yliki area, the retention – infiltration rainwater runoff tanks have been constructed at the site, as provided by E.T. d-29.5 of JMD 101617/22.09.2006 for the Yliki-Kastro section.

It is noted that the Concessionaire has designed and disposes a pollution response plan to be implemented in case of accidental pollution that will include the use of these tanks in application of the ETs and its contractual obligations.

Two out of seven Pollution Control Units have not been constructed in at “Agios Konstantinos - Kamena Vourla” section, which are planned to be constructed in accordance with the E.T. d-32 of JMD 85676/30.07.2002. The Greek State is expected to install the remaining two tanks.

- Water Quality

Within the framework of the water-monitoring program, for 2022, fourteen (14) samplings were carried out in one set on PATHE Motorway (Yliki section) and IONIA ODOS Motorway.

The samplings were collected on May 24-26 in special sterile collectors with a capacity of 2 liters provided by a specialized laboratory that performed the chemical analysis. The results of the water samples will be displayed in the second semester (annual report) where the analyzes will be completed.

12. PLANTINGS – MAINTENANCE OF VEGETATION

A contract has been concluded with a Subcontractor for the maintenance and management of the vegetation and the plantings.

13. CONCESSIONAIRE’S ENVIRONMENTAL DEPARTMENT

The Nea Odos S.A. is the “Concessionaire” for the Project “Aftokinitodromos Ionia Odos from Antirrio to Ioannina, Athens PATHE (Metamorfossi I/C) – Maliakos (Skarfeia) and PATHE Connecting branch Schimatari – Chalkida” according to the Concession Agreement.

Under the Operation & Maintenance Agreement dated 5.3.2021 the Concessionaire has assigned to the Operator, and the Operator has assumed all of its obligations, risks, liabilities and rights of the Concessionaire under the Concession Agreement, in respect of the operation and maintenance of the Concession Project, on a back to back basis.

Pursuant to the provisions of the Concession Agreement and the Operation and Maintenance Agreement, the Concessionaire – inter alia - retains the following responsibilities:

- Monitors and supervises the observance of the Environmental Requirements in accordance with the Concession Agreement provisions
- Submits reports and updates to the State in accordance with the Concession Agreement provisions

The obligations regarding the protection of the environment during the Operation & Maintenance activities of the motorways are set out in Art. 11 of the Concession Agreement, Art. 2.3 and Art. 2.6 of the SCC and in Annex A of the SCC (Environmental Licensing of the Project). The JMDs of the Approved Environmental Terms (JMD AET) that govern the Project are set out in Annex E.

The AETs are different by motorway section and specific in terms of needs for all areas, but also in terms of the motorway O&M impact on the environment.

For the effective implementation of those above mentioned, an Environmental Management System is up and running to cover these specific requirements. Maintaining a relevant certification according to the corresponding international standard ISO 14001 provides for the possibility of maintaining in force the above environmental terms for a longer period.

This System, in synergy with the correspondingly certified Environmental Management System of the Concessionaire will cover horizontally the entire Concession Project.

To implement those aforementioned, both the Operator and the Concessionaire dispose a department for Environment with specialized personnel, which is responsible for the inspection and compliance with the E.T. along the motorways. They also cooperate with a special advisor in order to create a group of scientists to cover the extended range of the environment. The group of scientists consists of a Civil Engineer – Transportation Expert – Acoustical Engineer, an Environmentalist – Environmental Planner, and an Environmentalist – Chemist – Acoustical Engineer, to fully meet the inspection needs of the E.T. for the road project.

14. REPORTS (SEMI-ANNUAL – ANNUAL – SUBMISSIONS)

For the year 2021, the 1st semi-annual Report of Environmental Monitoring of the Concession Project under study, which has been submitted by the Concessionaire under prot. no. 49291/23.07.2021 letter of the Supervisory Authorities and GDPP/YPEN (Δ17 receipt prot. no. 201862/26.07.2021, DIPA receipt prot. no. 71097/4586/26.07.2021 & KSESP receipt prot. no. 201837/26.07.2021), as well as the annual report of 2021 Environmental Monitoring of the under-study Concession Project, which has been submitted by the Concessionaire under prot. no. 49761/17.03.2022 to the Supervisory Authorities and GDPP/YPEN (Δ17 receipt prot. no. 80530/17.03.22, EYDE/KSESP receipt prot. no. 80673/17.03.22 and DIPA/YPEN receipt prot.no. 26651/1753-18.03.22).

15. MONTHLY FOLLOW UP – CHECK LISTS

Based on the Environmental Monitoring and Control Program and the Environmental Management System, the “Tables for the Implementation of the Environmental Terms” are established, outlining the ways and methodology of the necessary actions, in order to ensure the implementation of the Environmental Terms.

Environmental supervisors, in collaboration with the project engineers, perform regular (monthly) checks and complete the control tables, i.e. the implementation of the "Environmental Monitoring and Control Program". They also provide the necessary guidelines or directions based on the Environmental Monitoring and Control Program for any environmental issue that arises.



After each regular (monthly) check, the corresponding checklist is filled out, which shows deviations from the implementation of the environmental terms identified by the inspections. The same table provides the proposed corrective actions. The tables are sent to the company responsible for the operation to take all necessary actions and the appropriate measures to comply with the environmental law and the environmental terms of the project. In the following recheck, it is examined whether all the necessary measures and the proposed corrective actions have been taken and the corresponding fields of the monthly checklist are filled.

The Environmental Management System (EMS) being implemented consists of the Manual, the Procedures, the Work Instructions related to the environment and the compliance with the environmental requirements of the project. The environmental management manual, procedures and instructions are applied uniformly throughout the project and are constantly evolving to meet project needs.

16. INSPECTIONS BY ENTITIES - FINES

For the reference period (A' semester 2022), by letter no. 58353/12.04.2022 of the Western Greece Water Administration, administrative sanctions for breach of the JMD provisions no. 146896/17.10.2014 "Categories of licences for use and execution of water utilization projects. Procedure and conditions for issuing licences, content and duration of their validity and other relevant provisions" were imposed. Specifically, for the offshore drilling on Ionia Odos without a project execution licence at the CHs: "Amfilochia MSS" and "CH. 121+050 Ionia Odos". The proof of payment of the fine to the Western Greece Water Administration was sent with Nea Odos S.A. letter no. 49940/20.05.2022.

17. CERTIFICATIONS

NEA ODOS S.A. and the Operator have developed and implemented individually an Integrated Management System (IMS) resulting from the integration of the Quality, Environment and Safety & Health Systems applied by each company. The aim of both IMSs is to ensure the most efficient management of quality, environmental and S&H issues by eliminating overlapping procedures and controls.

In July 2022, the independent certification body Bureau Veritas is expected to carry out the annual inspection scheduled for NEA ODOS S.A. and the Operator according to the standard Management Systems ISO 9001 (Quality), ISO 45001 (Health & Safety), ISO 14001 (Environment).

Furthermore, NEA ODOS S.A. and the Operator - recognizing the need for the smooth operation of the motorways falling within their responsibility - separately designed a Business Continuity Plan on which they relied for the implementation of their own Business Continuity Management System (BCMS). In 2020, the BCMS of NEA ODOS S.A. has been certified according to the international standard ISO 22301:2012, thus making the latter the first Concession Company to receive the relevant certification.

The annual inspection seeking to certify the BCMS of NEA ODOS S.A. (and upgrade to the new standard ISO 22301:2019) and the first inspection seeking to certify the Operator's BCMS were completed in February 2022.

In addition, NEA ODOS S.A. in 2015 planned and implemented a Road Safety Management System certified in accordance with the international standard ISO 39001:2012, thus constituting a milestone for the safe and efficient fleet management, and demonstrating the company's commitment to implement safe practices on the motorway. The Operator implements the system in 2021.

In July 2022 the annual inspection to certify the Operator's ISO 39001 (Road Safety) Management System is expected.

Collectively, NEA ODOS S.A. and the Operator are certified according to the following Management Systems Standards:

Collectively, NEA ODOS S.A. is certified according to the following International Standards:

- ISO 9001 (Quality Management System)
- ISO 45001 (Health & Safety Management System)
- ISO 14001 (Environmental Management System)
- ISO 22301 (Business Continuity Management System)

OPERATOR

- ISO 9001 (Quality Management System)
- ISO 45001 (Health & Safety Management System)
- ISO 14001 (Environmental Management System)
- ISO 39001 (Road Traffic Safety Management System)
- ISO 22301 (Business Continuity Management System)

Following the above inspections, the independent bodies recommended the continuance of the Certifications for all standards and for at least one year until the next annual scheduled inspection.



18. ENVIRONMENTAL BUDGET

The necessary percentage of the total budget for the motorway operation and maintenance required to fully comply with the Environmental Terms and restrictions of the relevant JMD-ETA is made available as a matter of priority. Expenditure on environmental protection projects is included in the annual progress reports on compliance with the Environmental Terms.

19. CORPORATE SOCIAL RESPONSIBILITY

Nea Odos compiles a Corporate Responsibility Report in accordance with the Global Reporting Initiative (GRI) standard, the GRI Standards, and meets the Baseline Selection criteria (in accordance with: Core option).

The Report covers all the core and substantial issues that Nea Odos has identified and focuses on, including environmental issues.

The Reports are issued on an annual basis and cover the 5 Corporate Responsibility pillars for Operation & Maintenance activities:

- Road Safety
- Quality on providing Services
- Caring for the Environment
- Collaboration with Local Communities and Social Contribution

The Corporate Responsibility Report is posted at <http://www.neaodos.gr>



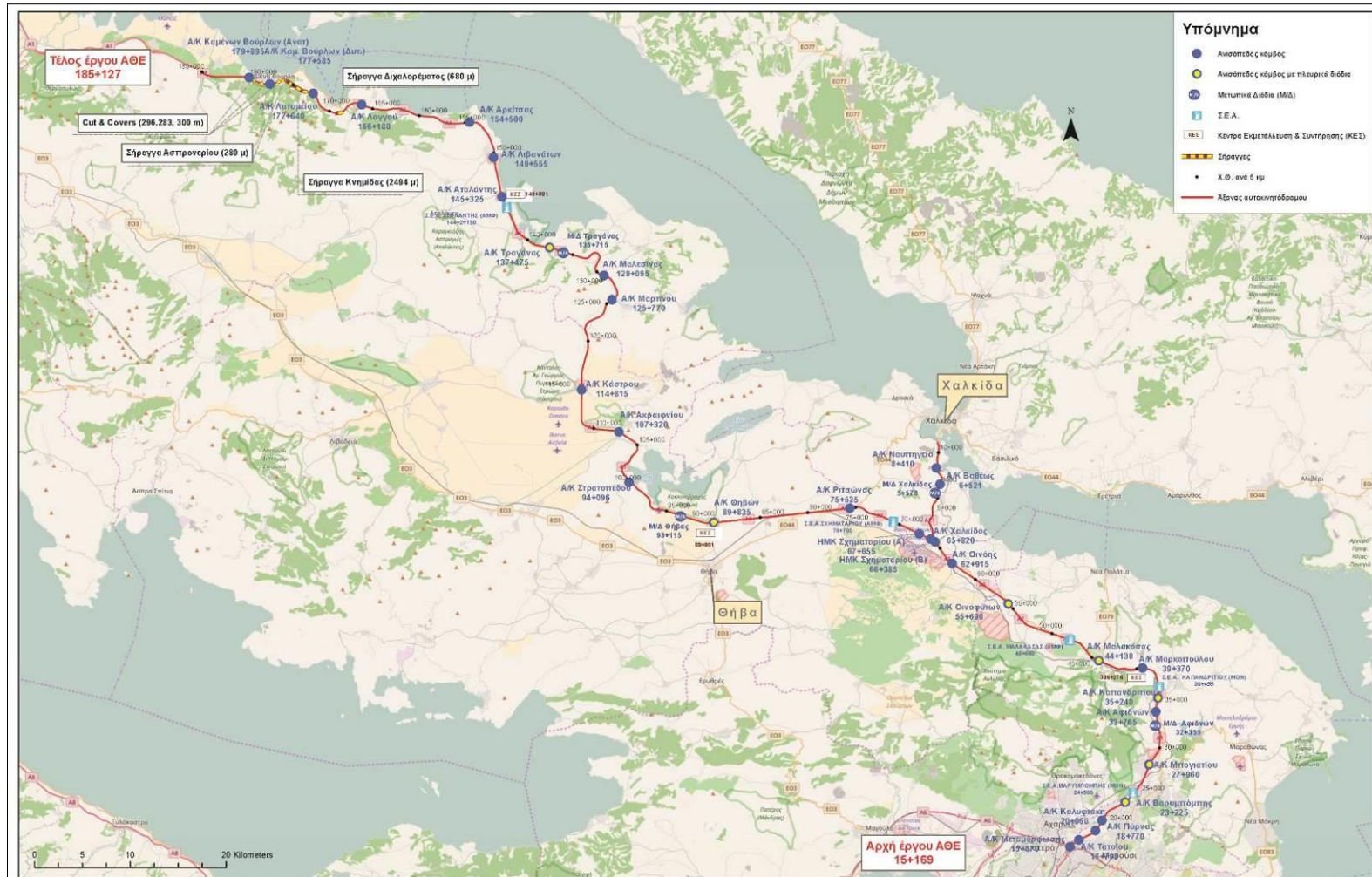
Nea Erythrea, 146 71, Athens, Greece

Tel.: +30 210 34 47 300, Fax: +30 210 61 78 011,

Web: <http://www.neaodos.gr>, Email: info@neaodos.gr

20. ANNEXES

Annex I



Αυτοκινητόδρομος ΑΘΕ (Μεταμόρφωση - Σκάρφεια)

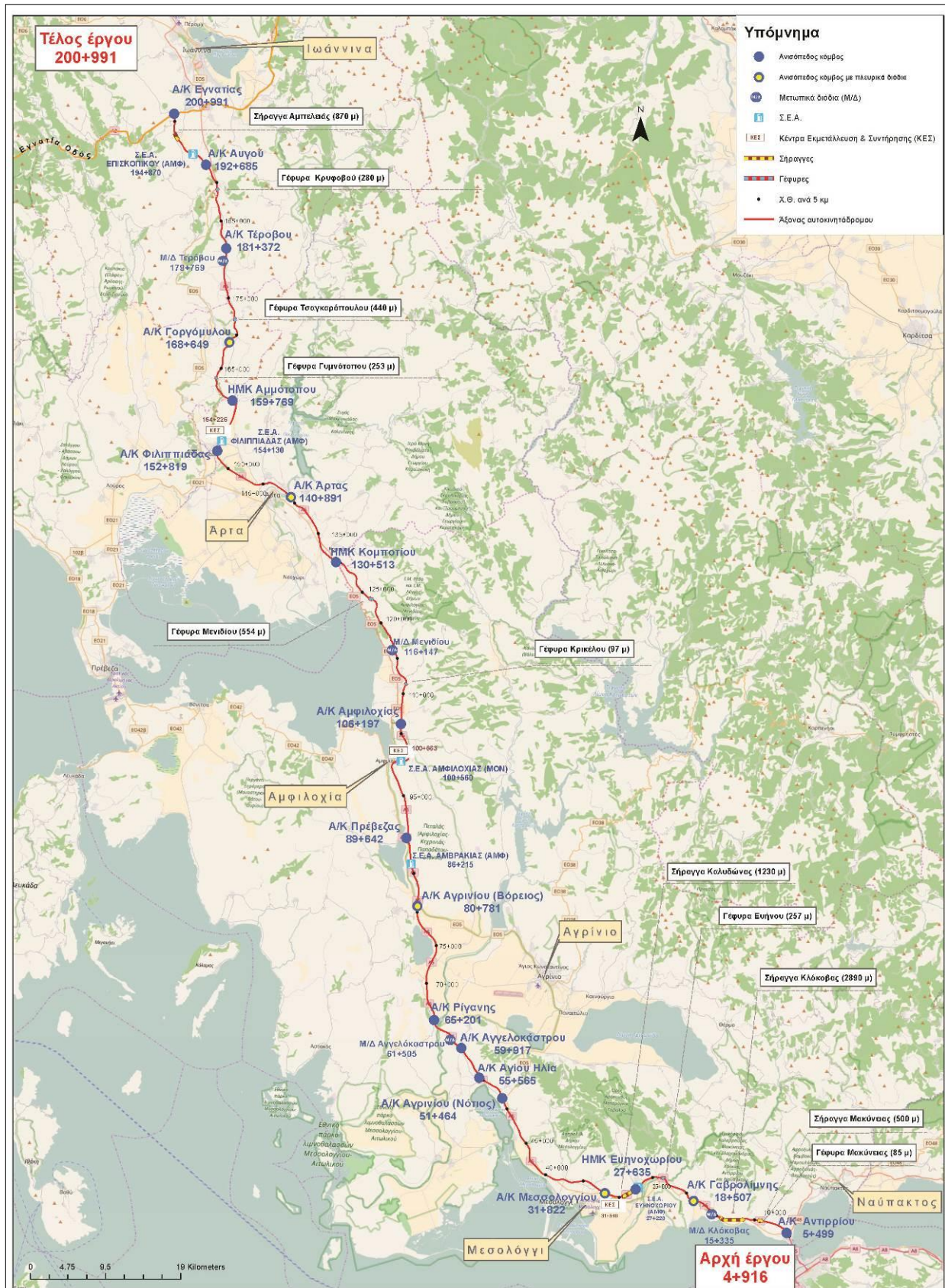


Οι κεντροβαρικές γεωγραφικές συντεταγμένες του έργου δίνονται στον πίνακα που ακολουθεί:

Θέση	Νέα Εθνική χιλιόμετρηση (έγγραφο Α4/01/11/24334/20- 05-2014 της ΕΥΔΕ ΛΣΕΠ)	X	Y
Μεταμόρφωση - Υλίκη			
Αρχή Έργου (Αρχή ΑΚ Μεταμόρφωσης)	15+169	477.704,13	4.212.074,72
ΑΚ Μεταμόρφωσης	15+570	477.885,35	4.212.432,43
ΑΚ Τατοίου	16+795	478.803,39	4.213.176,19
ΑΚ Πύρνας	18+770	480.528,53	4.214.128,39
ΑΚ Καλυφτάκη	20+060	481.232,95	4.215.205,97
ΑΚ Βαρυμπόμπης	23+225	483.636,34	4.217.100,85
ΑΚ Μπογιατίου	27+960	486.135,72	4.221.052,73
ΑΚ Αφιδών	33+765	486.836,62	4.226.499,61
ΑΚ Καπανδριτίου	35+240	487.071,91	4.227.935,73
ΑΚ Μαρκόπουλου	39+370	485.441,08	4.231.099,25
ΑΚ Μαλακάσας	44+130	480.901,82	4.231.825,53
ΑΚ Οινοφύτων	55+690	471.458,59	4.237.784,29
ΑΚ Οινόης-1 κλάδος	62+915	465.593,99	4.241.982,75
ΑΚ Χαλκίδας	65+820	463.808,89	4.244.245,76
ΗΜΚ Σχηματαρίου Α	66+385	463.341,50	4.244.550,69
ΗΜΚ Σχηματαρίου Β	67+655	462.189,35	4.245.085,15
ΑΚ Ριπσώνας	75+525	454.958,29	4.247.772,51
ΑΚ Θηβών	89+835	440.725,56	4.246.258,46
Τέλος τμήματος	95+535	435.241,84	4.247.626,84
Υλίκη - Κάστρο			
Αρχή Έργου (5,7χλμ μετά ΑΚ Θηβών)	95+535	435.241,84	4.247.626,84
ΑΚ Στρατοπέδου	100+270	431.916,01	4.250.486,06
ΑΚ Ακράϊφιου	107+320	430.828,63	4.255.672,12
ΑΚ Κάστρου	114+815	426.936,82	4.260.067,73
Τέλος έργου (πέρας ΑΚ Κάστρου)	116+247	426.951,53	4.261.499,37
Κάστρο - Τραγάνα			
Αρχή Έργου(πέρας ΑΚ Κάστρου)	116+247	426.951,53	4.261.499,37
ΑΚ Μαρτίνου	125+770	430.127,15	4.269.494,11
ΑΚ Μαλεσίνας	129+095	429.301,45	4.272.016,37
Τέλος έργου (αρχή ΑΚ Τραγάνας)	136+630	424.421,06	4.274.683,45
Τραγάνα - Αρκίτσα			
Αρχή Έργου (αρχή ΑΚ Τραγάνας)	136+630	424.421,06	4.274.683,45
ΑΚ Τραγάνας	137+475	423.615,59	4.274.923,36
ΑΚ Αταλάντης	145+325	418.648,20	4.280.224,65
ΑΚ Λιβανάτες	149+555	417.755,41	4.284.354,75
ΑΚ Αρκίτσας	154+500	415.271,46	4.288.009,41
Τέλος έργου (πέρας ΑΚ Αρκίτσας)	155+400	414.377,53	4.287.920,95
Αρκίτσα - Άγιος Κωνίνος			
Αρχή Έργου (πέρας ΑΚ Αρκίτσας)	155+400	414.377,53	4.287.920,95
Τέλος έργου (αρχή ΑΚ Λόγγου πέρας ομώνυμης Γέφυρας)	165+767	404.407,05	4.289.687,45

Θέση	Νέα Εθνική χιλιόμετρηση (έγγραφο Α4/01/11/24334/20- 05-2014 της ΕΥΔΕ ΛΣΕΠ)	Χ	Υ
Άγιος Κωνίνος – Καμένα Βούρλα			
Αρχή Έργου (αρχή ΑΚ Λόγγου πέρας ομώνυμης Γέφυρας)	165+767	404.407,05	4.289.687,45
ΑΚ Λόγγου	166+180	404.021,217	4.289.837,355
ΑΚ Λατομείου	172+640	398.968,909	4.291.029.900
ΑΚ Κ. Βούρλων (Δυτ)	177+585	394.435,212	4.292.011,886
ΑΚ Κ. Βούρλων (Ανατ)	179+895	392.278,646	4.292.683,852
Τέλος έργου (πέρας ΑΚ Κ. Βούρλων (Ανατ.))	181+882	390.404,314	4.292.770,696
Καμένα Βούρλα - Μενδερίτσα			
Αρχή Έργου (πέρας ΑΚ Κ. Βούρλων (Ανατ.))	181+882	390.404,314	4.292.770,696
Τέλος έργου	185+127	387.206	4.293.354

FOR THE ENVIRONMENTAL MANAGEMENT AND IMPLEMENTATION
OF ENVIRONMENTAL TERMS DURING OPERATION AND MAINTENANCE



Αυτοκινητόδρομος Ιόνια Οδός